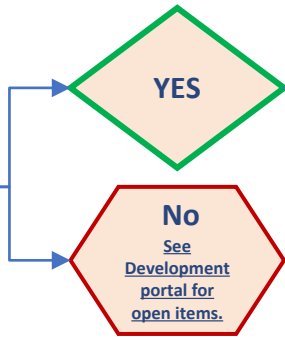


Toho Water Authority Private Development Project Flow Chart

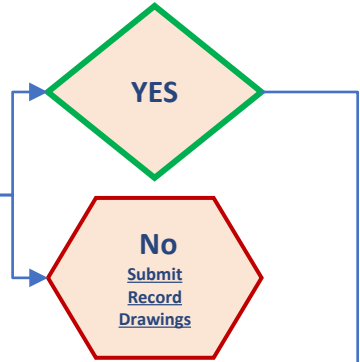
Final Inspection and Project Closeout Steps



Inspections completed?
Ready for Final Inspection and Closeout?



Submit Record drawings. **Record drawings are reviewed by assigned Inspector** and GIS (Geographic Information System) See review timelines.



Has your project completed the following?

- Density test completed. Submit only Toho's required information for review.
- Backflow certifications- submitted to backflowcompliance@tohowater.com and your DPM.

Contractor schedules Pre Final Inspections with their assigned Inspector. Inspections must be scheduled 72 hours in advance. Inspector will generate a punch list prior to leaving job site.

Inspection Fees and Maintenance Bond shall be paid after Toho DPM approves certified cost of construction.

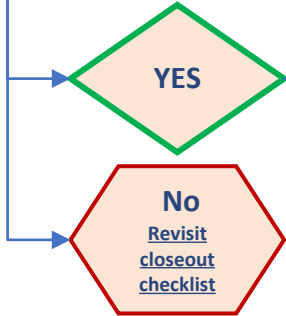
Toho reviews Certified Cost of Construction. **Inspection fees shall be 3% of the construction cost. Toho shall require a maintenance bond, which shall be 10% of the total cost of public construction.** Maintenance Bond is held by Toho for 2 years.

Utility Final Site Inspection
The underground contractor is responsible for scheduling Utility Site Final Inspection with their Toho DPM. All punch list items must be corrected prior to scheduling. Failed inspection may result in additional fees.

Submit signed and sealed certified cost of construction by Engineer of Record (EOR)? **See Cost of Construction Template.**

Please note- Multi-Unit projects will require individual Utility CO Inspections. Sewer Connection Inspection, Utility Final Site Inspections and all open items on the project closeout checklist prior to issuance of CO's. **See Toho Development Portal for requesting.**

Toho Development Project Manager (DPM) has accepted the Project?



Developer enters the Maintenance Bond Period.

Toho shall conduct CCTV inspections on all new sanitary sewer lines and manholes approximately 21 months after project completion. Toho shall provide to the developer and contractor a list of discrepancies, corresponding project map and a copy of the CCTV video inspection

Developer shall address discrepancies within 15 days. Failure to address provided discrepancies may result in Toho using supplied Maintenance Bond to ensure the necessary corrections, cleaning and or repairs. *If no corrections are needed, Developers Maintenance Bond is returned after 2 years.

Customer Responsibility

Toho Responsibility