

Toho Water Authority Private Development Project Flow Chart
Pre-Construction and Inspection Steps



Ready for a Pre-Construction Meeting?
 If you're ready to schedule a Pre-Construction meeting and your plans have been approved, reach out to your Development Project Manager (DPM)



Pre-Construction Meeting sign in sheet completed and returned. Meeting held and DPM forwards plans

And

Request a **Pre-Existing Infrastructure Inspection** with Toho Inspector to document existing conditions on site

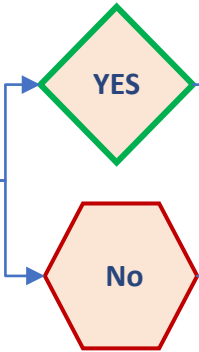
Track your progress on Toho Water Development Portal- Your approved plans are available in Portal.

Construction begins
 Contractor coordinates inspections with your assigned Inspector

- Sewer Inspections
- Potable Water Inspections
- Irrigation Inspections

See Inspection/Testing Workflow

Does your project have a Toho Lift Station?



Please see Lift Station workflow for all Lift Station requirements

Submit **Toho Efficiency Program (TEP)** review. Water conservation coordinator reviews and provides comment, repeat until TEP acceptance

FDEP clearances and the TEP process happen concurrently throughout construction

FAQ's

Log into **Toho Development Portal (Tyler)** and create a **Toho Utility Permit (TUP)** One per municipal permit/ building. You can continue to track your progress.

Meters may be requested after FDEP issues clearance

FDEP Water Clearance Processed.

- Partial Water Clearances are acceptable but Total clearance is required for CO.
- If you have questions regarding TEP, please contact Toho's Water Conservation Coordinator, Rodney Tilley at rtilley@tohowater.com
- Hydrostatic pressure tests, Bac-T and As-Builts must be submitted with the FDEP clearance application
- Bac-T tests expire after 60 days. FDEP application package is submitted within 50 Days of last Bac-T test.
- Sanitary Sewer CCTV video's (Developers Expense) must be submitted to Toho through DPM, not the Inspector.

Customer Responsibility
 Toho Responsibility

FDEP Sewer Clearance Processed once sewer inspection are complete. Request sewer connection inspection via TUP. **See TUP workflow**

Project is ready to begin the **closeout process**