

# Cypress Lake

## ALTERNATIVE WATER SUPPLY PROJECT

Phase 1 will provide up to 17 million gallons per day (MGD) and is estimated to cost \$300M

### Water Cooperative of Central Florida



**30M+**

30 to 34 million gallons of potable water will be produced daily upon completion of Phase 2.



**350K**

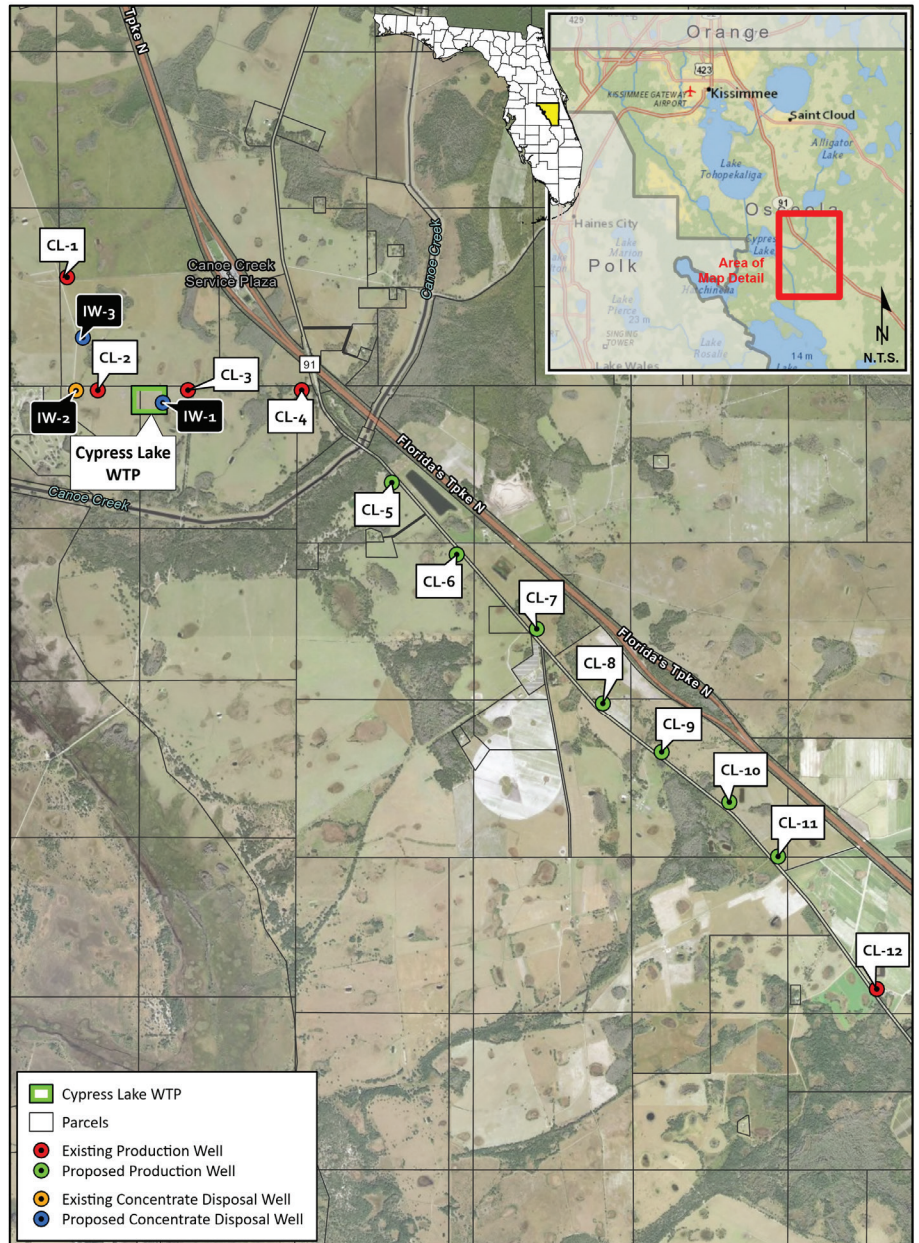
The facility will provide sustainable water supply for 350,000 people daily.



**2029**

Phase 1 of the facility is expected to be completed in 2029. Completion of phase 2 is yet to be determined.

[tohowater.com](http://tohowater.com)



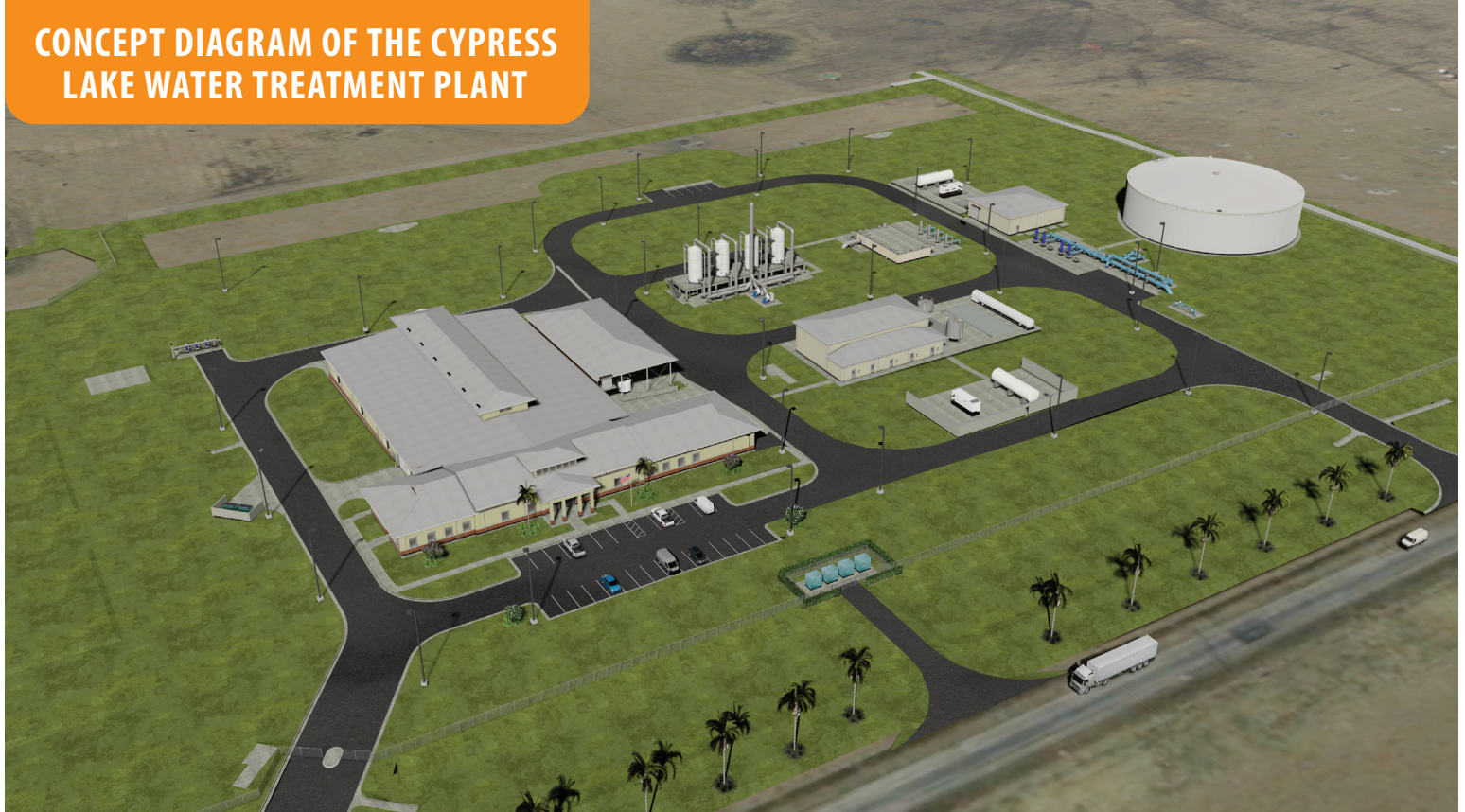


# Cypress Lake

## ALTERNATIVE WATER SUPPLY PROJECT

**THE WATER COOPERATIVE OF CENTRAL FLORIDA** consists of the City of St. Cloud, Toho Water Authority, Orange County, and Polk County. In 2011, the Water Cooperative of Central Florida was created to develop regional projects to meet the needs of future growth.

### CONCEPT DIAGRAM OF THE CYPRESS LAKE WATER TREATMENT PLANT



### WE'VE COMPLETED

- Governance Agreement approved by Partners
- 90% final design of water treatment facility
- Construction of 4 water supply wells
- Design and bidding of raw water piping to the facility
- Construction of one concentrate disposal well (second well under construction)
- Property Acquisition for the water treatment facility, 4 well sites and associated raw and finished water piping

**REVERSE OSMOSIS TECHNOLOGY** will be used to treat brackish water from the Lower Floridan Aquifer and provide up to 17 million gallons of potable water daily for Phase 1. Phase 2 will increase the treatment capacity up to 30-34 million gallons a day.

### ENVIRONMENTAL BENEFITS

- **PROTECTS AND PRESERVES** the Upper Floridan Aquifer
- Provides a **SUSTAINABLE WATER** resource to meet future demands



**CONTACT INFORMATION:** Todd P. Swingle, P.E., CEO/Executive Director

**ADDRESS:** 951 Martin Luther King Blvd., Kissimmee, FL 34741

**EMAIL:** tswingle@tohowater.com **PHONE:** 407-944-5131 **MOBILE:** 407-624-1026